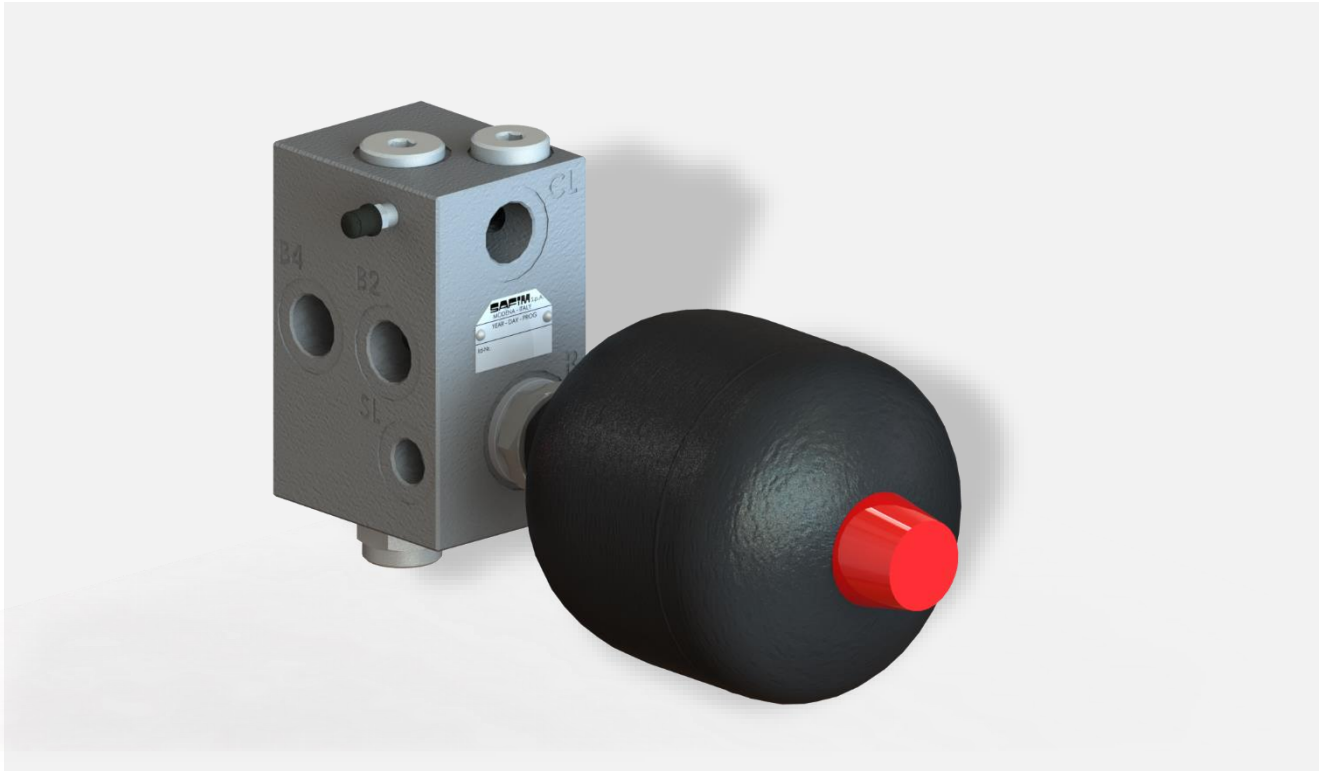


RELAY VALVE

Valves for braking systems



TOWED VEHICLES |



- **Relay valve with low pressure accumulator** filled by trailer Supplementary Line.
- **No need for accumulator pressure warning lamp in the cabin:** the SL supply system do not require any service brake action to recharge the accumulator, because the Supplementary Line is always in pressure when trailer is connected to the tractor.
- **3 or more axle vehicles** can now match the requirements of the (UE) 2015/68 Regulation concerning response time tests.
- **Internal balancing system** for perfect correspondence between input and output pressures.
- A **pressure return signal** can be connected to the relay valve to obtain the maximum response time improvement.
- Availability of **multiple output connection ports** for an easy connection.
- If properly installed, it can ease a lot the **air bleeding procedure of the braking system.**