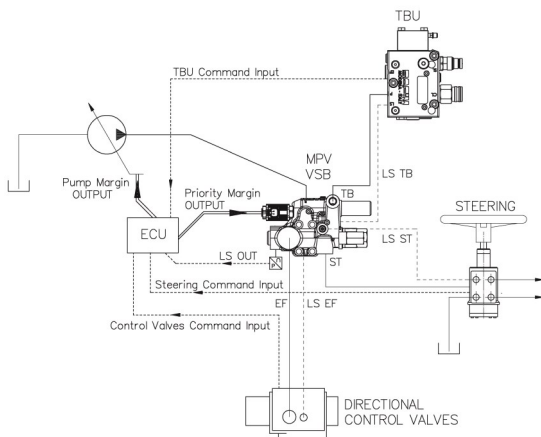


# MPV-FL MASTER PRIORITY VALVE WITH VARIABLE STAND-BY



## ENERGY SAVING

## PRODUCT OVERVIEW

The MPV-FL can adapt its functioning and the energy consumption of the hydraulic system in relation to the functioning conditions of the vehicle. Such adjustments are possible thanks to a proportional electro-hydraulic command acting on the load-sensing command.

## FEATURES

- | Multi-Level Priority Valve engineered to prioritize : Steering | Brakes | Transmission | Auxiliary Functions
- | LS margin electronically adjustable for various logics : Energy Efficiency | Peak Performance | Adaptive to working conditions | Tailored to the needs of current systems
- | Fault-Tolerant hydraulic design with multiple logic configurations : Integrated proportional device | Synchronized with external devices (like pump compensator)

Safim S.r.L

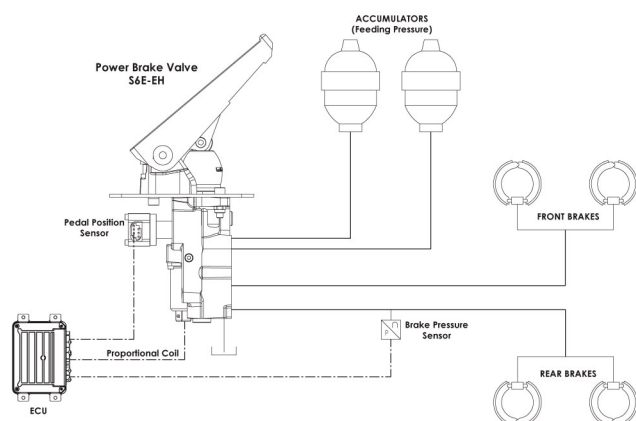
Via D. Livingstone 6  
41123 Modena—Italy

T. +39 059 894411

info@safim.it | www.safim.it

# S6E-EH

## POWER BRAKE VALVE WITH ELECTRO-HYDRAULIC CONTROL FOR BRAKE BY WIRE



**SAFETY FIRST**

## PRODUCT OVERVIEW

This type of valve allows multiple functions to be implemented to support or replace specific operator actions in order to increase safety in challenging work fields, such as autonomous driving, collision avoidance, hill holding and other functions.

## FEATURES

- | Engineered for large volume, high flow applications
- | Single or Dual braking circuit options
- | Interchangeable with current solution
- | Integrated EH-PRV for : Remote braking | Dual Operator Stations | Collision Avoidance | Traction Control | Hill Holding
- | Integrated Position Sensor Option

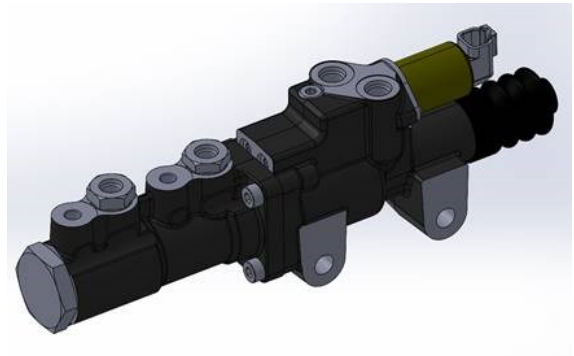
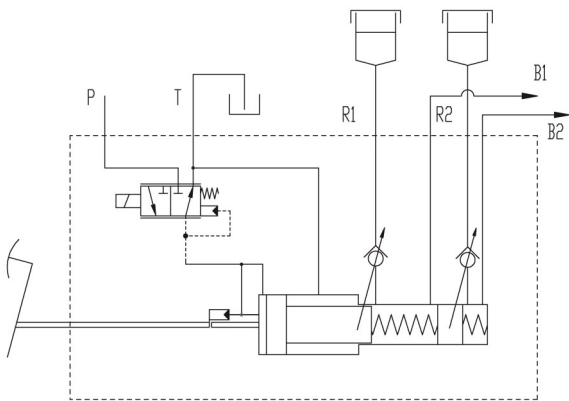
Safim S.r.L

Via D. Livingstone 6  
41123 Modena—Italy

T. +39 059 894411

info@safim.it | www.safim.it

# MC-SB-S-EH EH-ACTUATED MASTER CYLINDER



**SAFETY FIRST**

## PRODUCT OVERVIEW

This type of valve allows multiple functions to be implemented to support or replace specific operator actions in order to increase safety in challenging work fields, such as autonomous driving, collision avoidance, hill holding and other functions.

## FEATURES

- | Space-saving layout for up to 2 Braking Circuits (Mineral Oil or Brake Fluid)
- | Integrated EH-PRV for : Remote braking | Dual Operator Stations | Collision Avoidance | Traction Control | Hill Holding
- | Integrated Position Sensor Option : Fault diagnostic | Inching command
- | Various internal logic element options for custom applications
- | Selectable Braking Modes : On-Road | Off-Road | Work Mode

Safim S.r.L

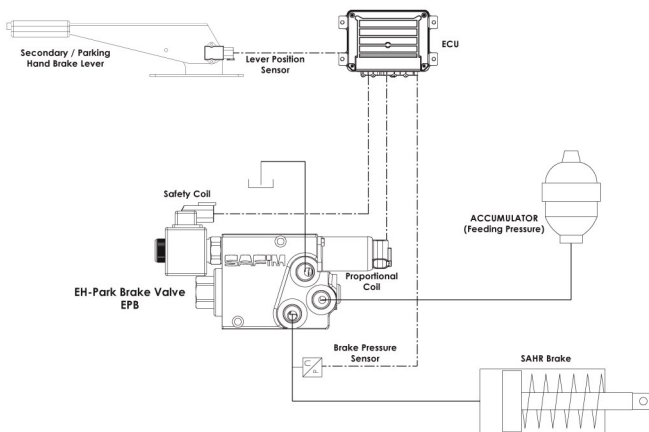
Via D. Livingstone 6  
41123 Modena—Italy

T. +39 059 894411

info@safim.it | www.safim.it

# EPB

## ELECTRO HYDRAULIC PARKING BRAKE VALVE



## LATEST REGULATION COMPLIANCE

## PRODUCT OVERVIEW

The valve is compliant to the Regulation UE 2015/68 integrating the rules UE 167/2013, which guarantees the highest safety standards. This valve has a simplified architecture, low current absorption and small footprint if compared with other market standards.

## FEATURES

- | Negative modulation logic enables the optimization of SAHR brake control
- | Redundant safety logic complies with Regulations
- | Excellent reactivity due to wide internal core passages
- | Brake pressure is consistently controlled, mechanically limited, and unaffected by thermal variations
- | Modular design
- | Optimized modulation range for each SAHR axle
- | Enables SAHR brake to be modulated for secondary braking requirements

Safim S.r.L

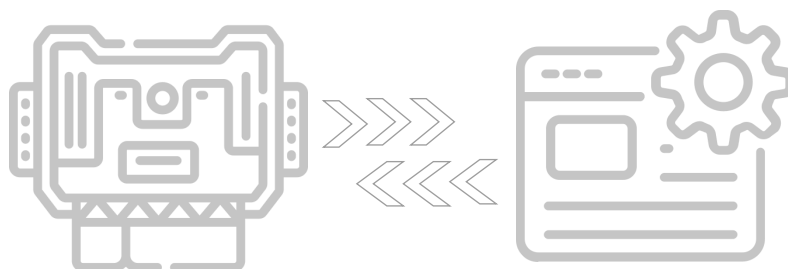
Via D. Livingstone 6  
41123 Modena—Italy

T. +39 059 894411

info@safim.it | www.safim.it

# ECU

## ELECTRONIC CONTROL UNIT



## PRODUCT OVERVIEW

The SAFIM ECU integrates a customized algorithms tailored for SAFIM EH components, while also enabling seamless connection with the customer's ECU to adjust braking functions based on varying driving conditions. It also includes advanced diagnostic features to meet functional safety standards.

*\*work in progress*

## FEATURES

- | Customizable software to meet customer requirements.
- | Compliance with electrical and electronic functional safety standards as per ISO 19014 and ISO 25119\*
- | Adherence to cybersecurity standards \*
- | CAN communication up to 2Mb/s.
- | ECU developed in accordance with the Quality Management System ISO : 9001

Safim S.r.L

Via D. Livingstone 6  
41123 Modena—Italy  
T. +39 059 894411

[info@safim.it](mailto:info@safim.it) | [www.safim.it](http://www.safim.it)